



Worcestershire 2022

FESTIVAL NEWS

**Masonic**
Charitable Foundation

A message from the Festival Chairman....

At the beginning of September, our Festival total stood at just over £516,000. This includes all cash donations and the full amount of pledges made over the next five years through regular giving. For sure this is a good start, but we must maintain momentum and not forget that without the 506 of our members who have already signed up to regular giving, the Festival total would stand at £243,000. Read below to appreciate the impact that regular giving will have.

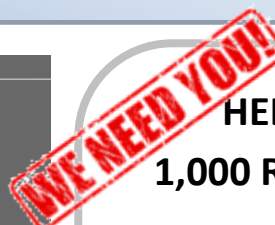
As we enter a new Masonic season, it is clear to see that there is a long way to go to reach our £2,022,000 target in support of the Masonic Charitable Foundation. We must do everything we can to achieve this and whilst I know it won't be easy, with your ongoing support, I also know that we can do it. Be as imaginative as you can and give thought to your fundraising activities, keep sending us those photos of Little Ted (see www.festival2022.org.uk/ted), and enjoy the newsletter and journey.

**Patrick Firminger**

Regular Giver tables *

	Lodge Name	Lodge Number	% of members regular givers
1	Round Table	7961	54%
2	Fort Royal	4565	51%
3	Northfield	5056	51%
4	Wernlegh Abbey	6356	48%
5	Bon Accord	4935	47%
6	Stechford	3185	42%
7	Old Edwardian	6141	40%
8	Masefield	2034	37%
9	St. Laurence	2724	37%
10	Old Bromsgrovian	5743	36%
11	Crystal	8881	33%
12	Remembrance	8323	32%
13	Lodge of Yardley	6324	32%
14	Royal Standard	498	31%
15	Pathfinder	8596	29%
16	Francis Burgess	9287	28%
17	St. John in Bedwardine	7458	27%
18	Weatheroak	7214	27%
19	Sabrina	6595	27%
20	Severn	5583	26%
21	Servator	6115	25%
22	Peace & Goodwill	6010	25%
23	Wyche	3638	25%
24	White Ensign	9169	25%
25	Elgar	9254	25%
45	Lodge at No 45 Of 115		15%
65	Lodge at No 65 Of 115		11%
85	Lodge at No 85 Of 115		6%
105	Lodge at No 105 Of 115		0%
115	Lodge at No 115 Of 115		0%

*NOTE: We are aware of the several lodges that have regular givers using their own or Masonic Hall relief chests, which are not included in the figures above. If these lodges wish to be included please give the details to David Rice at david.rice5224@talktalk.net



HELP US REACH 1,000 REGULAR GIVERS

The impact and importance of Regular Giving cannot be overstated if we are to achieve £2,022,000.

You can judge the importance when you realise that 53% of our current Festival total is represented by regular giving. The total of these pledged amounts (£273,000) is already included in our £516,000 sum and will therefore not be added again.

The figures speak for themselves. Without regular giving, pre-launch donations and an initial enthusiasm that all new Festivals benefit from, the rate of donations over the first few months will make it difficult for us to reach our target by August 2022.

We are just over half way to 1,000 regular givers or 38% of Province. The number currently stands at 506 and by increasing to 1,000 in the coming months, targets come clearly into focus and we will stand a much better chance of crossing the line by 2022.

Please give careful consideration to becoming a regular giver. If you can afford the price of a "Costa Coffee" a week, take action now. It will make such a difference.

We are truly grateful to those who have supported the Festival so far. No amount of writing can express the difference it will make to the work of the MCF, so thank you for all you continue to do.

LODGE TARGETS and PROGRESS TO DATE

Your Worshipful Master and Charity Steward will shortly receive your Lodge Festival Target, together with your regular giver percentages and amount donated and pledged so far.

They will be asked to share this information with you.



Contact Us

For general enquires: info@festival2022.org.uk

For media or articles: media@festival2022.org.uk

Or to contact the Chairman: chairman@festival2022.org.uk

Facebook: Worcestershire 2022 Festival

Web: festival2022.org.uk

Twitter: @worcs2022



Worcestershire 2022

FESTIVAL NEWS



Masonic
Charitable Foundation

Regular Giving - Don't delay, do it today!

If you feel able, then whether it's £1 or £25 per month between now and August 2022 it doesn't matter. Every pound makes such a difference to the MCF! All you need to do is to have your bank account details to hand and either...



Telephone **NOW** on our dedicated line - **020 7395 9313** (quoting Festival Relief Chest number E2022. Or:

Go online **NOW** at – www.mcf.org.uk/festival/Worcestershire2022. Or;

Fill in and post a form **NOW** – all forms available from – www.festival2022.org.uk/downloads

or if you get stuck just email info@festival2022.org.uk for forms or for any advice



Masonic 18 months of the MCF: What have they been up to? Charitable Foundation (or expelling some of the myths about giving to the "London black hole....")

A perspective from the MCF...

We have now established the Masonic Charitable Foundation as one of the largest charities in the country, building on the legacy of the four separate charities that had existed since 1788. Caring for people is, and always will be, at the heart of what we do. We build better lives by encouraging opportunity, promoting independence and improving wellbeing; it is incredible to see our support changing lives. Over the last year and a half, we have proudly supported around 5,000 Freemasons and their families across England and Wales, as well as 477 local and national charities

We all know they are there to support Freemasons and their family members who are facing financial, health, family or care difficulties. However...

Supporting the wider community

Our support extends beyond Freemasonry through grants to local and national charities that help the most vulnerable people in wider society. From community nurses to artists teaching the blind; and from addiction support workers to adventure activities for disabled people; our support has funded projects that make both the ordinary and the extraordinary possible for those facing disadvantage. We have awarded 477 grants to charities since launching in 2016. Our funding will support access to education, employment or training for young people who are estranged from their family or carers. We're also funding pioneering medical research studies that will impact lives of those living with illness, and those yet to be diagnosed.

Celebrating the Tercentenary year

This year, we have taken our grant-making a step further to celebrate 300 years of Freemasonry. Through the MCF Community Awards, Freemasons and the public voted for 300 charities to receive £3 million, in grants of up to £25,000. An astonishing 177,809 people voted in the awards, and 87% were members of the public.

As we look towards the future, we hope our work will continue to make an impact on both the Masonic family and your local community.

We consider all applications for support on an individual basis, so if in doubt – please get in touch!

If you are a Freemason or close family member of a Freemason and need support with a financial, health, family or care need, call our confidential enquiry line on freephone **0800 035 60 90** or email help@mcf.org.uk.

If you are a representative of a charity, please visit mcf.org.uk/community to find out more about our Charity Grant programme, or call 0203 146 3337 for more information.

See Website www.mcf.org.uk for more details



Contact Us

For general enquires: info@festival2022.org.uk

For media or articles: media@festival2022.org.uk

Or to contact the Chairman: chairman@festival2022.org.uk

Facebook: Worcestershire 2022 Festival

Web: festival2022.org.uk

Twitter: @worcs2022



Worcestershire 2022

FESTIVAL NEWS



THE ADVENTURES OF FESTIVAL TED MASON

All Brethren will have received in the post and recently seen our first TED Newsletter outlining the tale of Festival Ted, and how we can sponsor him to travel the world looking for his lost teddies. Little Teddies have so far already been to the four corners of the globe!

See the map of his progress on the Festival website, and also a global map showing sightings of where his little teds have been spotted - visit festival2022.org.uk/ted

Teds Travels –how does it work?

All lodges will by now have received their own "little Ted". Email your photo of him with a caption if you wish (humorous or otherwise) to ted@festival2022.org.uk, or post them on **Facebook** or **Twitter**. If you add the hashtag **#festivalted**, TED MASON will place these sightings in an album and mark on his world map.

To view the album and the current map check out festival2022.org.uk/ted



Note: As a chaperone for Little Ted you do not have to raise sponsorship to take him away

TED CLIMBS TO NEW HEIGHTS!

Take your Lodge's little Ted with you on your travels and send us a picture



Old Bromsgrovian Lodge's Little Ted spotted at the top of Mont Blanc.

Courtesy of an expedition with members of the Old Bromsgrovian Expedition Club



Some of your latest pictures – for more visit festival2022.org.uk/sighting-album/



Contact Us

For general enquires: info@festival2022.org.uk

For media or articles: media@festival2022.org.uk

Or to contact the Chairman: chairman@festival2022.org.uk

Facebook: Worcestershire 2022 Festival

Web: festival2022.org.uk

Twitter: @worcs2022



Worcestershire 2022

FESTIVAL NEWS



Festival Ted Challenge

How does FESTIVAL TED MASON collect his lost little teddies?

By a single circumnavigation of the globe on a pre determined route to collect them wherever they may be.

The 25,000 mile trip is financed by **£5** sponsorship for *every mile* travelled. For each 185 miles of this trip one of the little teddies is recovered. If we can raise £125,000 through sponsorship in the next 5 years all the little teddies will be with Festival Ted Mason at PGL in June 2022. Click on the map for our latest video :)

As of now, Ted has travelled 548 miles, has left Paris, and about to get to Rome...and recovered 2 little Ted's – So how can you help move him along? See below ☺



EVERYDAY HERO

If we are to recover all little Teddies in time for 2022, we need you to think of a sponsored event as soon as possible. It could be a sponsored silence, walk, cycle, read or even a treasure hunt. In fact, it can be anything at all, but be as imaginative as you can and make sure you enjoy it with your friends and family. It doesn't even have to be energetic.

Once you've decided on your sponsored event it couldn't be easier to set up an online sponsorship page. Use **Everydayhero** and it will take the payments with **NO commission**, it will arrange the transfer and collect all gift aid – and we can advertise your event for you too!

Just visit

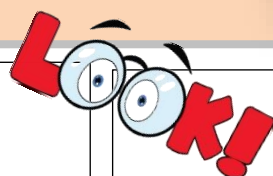
www.everydayhero.co.uk/event/E2022

You can of course raise sponsorship with a traditional paper form. However, those who have already set up their own Everydayhero page have been surprised at how easy it is to raise sponsorship. By simply placing their event on Facebook and Twitter and copying the Everydayhero link into an email before sending to friends, family and work colleagues, the sponsorship can come flowing in.

SET IT UP CORRECTLY AND IT WILL ALSO COUNT TOWARDS YOUR LODGES FESTIVAL TARGET.

If every member of your Lodge takes part in a Sponsored event, it is likely that all Lodges would reach and probably exceed their Festival target. Give it a go and be surprised!

Any help, just email our fundraising specialist Mark Babington on fundraising@festival2022.org.uk



SPONSORED EVENTS

Check the current sponsorship events including "half a ton for Ted", cycle challenge around the Province, sponsored motorcycle ride around four UK Islands, a sponsored beard shave and much more.

<https://www.everydayhero.co.uk/events/E2022>

As an example: Join our Assistant PGM and several other brethren in trying to lose "half a ton for ted" – they have all created a sponsorship page, and encouraged, cajoled, bribed friends to sponsor them to reach their own personal weight loss target, all to raise funds for the festival and ultimately the MCF. (And don't forget the funds raised all go to their own lodge festival targets too!)



HMV Britannia - The Royal Yacht - A Crewman's Story 17th November 2017 - £10

This interesting, and entertaining talk given by WBro. David R. Rushforth will take place at Stourport Civic Hall, with all proceeds going to Festival 2022. Tickets via your Lodge Festival Rep or from David at rushy53@yahoo.co.uk More details click [here](#)



Contact Us

For general enquires: info@festival2022.org.uk

For media or articles: media@festival2022.org.uk

Or to contact the Chairman: chairman@festival2022.org.uk

Facebook: Worcestershire 2022 Festival

Web: festival2022.org.uk

Twitter: @worcs2022



Worcestershire 2022

FESTIVAL NEWS



Festival JEWELS and Provincial TIES



If you qualify for a festival Jewel, they can be obtained by postal delivery by filling in the order form available on the website at

festival2022.org.uk/downloads

Or alternatively email info@festival2022.org.uk for a copy.

(Note: there is only one festival "steward" Jewel, all other honorifics are bestowed via letters and certificates)

Ties are now available for £15 and can be paid and collected from the following:

Bromsgrove - at the Provincial Office (01527 879300)

Worcester - Patrick Firminger on 01905 20636

Droitwich - Bill Tucker on 07774 700811 or wfgtskin@aol.com



Many Thanks!

These are some of the very generous large donations we've had recently. We appreciate all donations, so apologies if yours is not mentioned.

£2,750	Ladies Gift Fund
£2,430	Old Bromsgrovian Lodge
£1,000	Lodge of St Michael
£1,000	Chaddesley Corbett Lodge
£2,500	Masefield Lodge
£10,000	Worcestershire Province Lottery
£10,000	Page Lodge
£1,000	Pro-Patria Lodge
£10,000	Elmley Castle Lodge
£1,000	The Morgan Lodge
£1,000	Teme Lodge
£2,022	Mitton Lodge
£3,176	Frankley Beeches Lodge
£3,400	Old Bromsgrovian Lodge
£1,431	Wythall Lodge
£9,000	Moseley Lodge

If you know of an event where a donation is being presented, let us know at media@festival2022.org.uk and we can capture the moment!

Come and like our Facebook page

facebook.com/WorcsPGLFestival2022



Contact Us

For general enquires: info@festival2022.org.uk

For media or articles: media@festival2022.org.uk

Or to contact the Chairman: chairman@festival2022.org.uk



A Cheque presentation to the Chairman of the 2022 Festival Committee, at the installation of Weatheroak Lodge 7214 from their new WM WBro. Alastair Page.



Oh No! festival ted was in peril at the Lodge of Bon Accord 4935 family fun day! Did he get rescued in time?



Facebook: Worcestershire 2022 Festival

Web: festival2022.org.uk

Twitter: @worcs2022

Editor: WBro A Philpott



Worcestershire 2022

FESTIVAL NEWS



Current number of honorific levels

Get your **Direct Debit** form here



Steward
(£400)



169

Vice Patron
(£750)



114

Patron
(£1,000)



27

Grand Patron
(£1,250)



81

Get your **Jewel** form here



A festival Steward jewel is available for any qualifying Mason who has either donated, or pledged to donate at least £400 by the end of the appeal. All other levels of honorifics above a Steward will automatically be awarded by letter (Vice Patron or Patron) or certificate (Grand Patron).

Jewels can be ordered for postal delivery by completing the form available on the website or email info@festival2022.org.uk



Festival Ted Mason wearing his Festival Jewel at Provincial Grand Lodge, being escorted by Bro Mark Babington and WBro Andy Philpott, under the expert guidance of our **Provincial Grand Director of Ceremonies!**



Join us on Twitter **@worcs2022** for all the latest news, and don't forget to post your little ted photos with **#festivalted**

LODGE FESTIVAL STEWARDS FESTIVAL SEMINARS

As you will know the Provincial Grand Master has written to all Lodges and asked them to nominate a Lodge Festival Steward to act as their Festival Champion, if possible, until the end of the Festival.

In October a series of seminars have been arranged at three Masonic venues. A full Festival update will be provided, the Festival Stewards role and how a Lodge can meet its goals will be discussed and any questions answered. Tea, coffee and biscuits will therefore be provided at:

Northfield – Monday 9th October – 7:00 for 7:30 pm start

Worcester – Thursday 12th October – 7:00 for 7:30 pm start

Kings Heath – Monday 30th October – 7:00 for 7:30 pm start

Personal invitations have been sent to all Worshipful Masters, Lodge Festival Stewards, Secretaries, Charity Stewards and Hall coordinators. However, anyone is welcome but if you do wish to attend then could you please book yourself in, by emailing

JohnH@worcestershirepgl.org.uk



Contact Us

For general enquires: info@festival2022.org.uk

For media or articles: media@festival2022.org.uk

Or to contact the Chairman: chairman@festival2022.org.uk

Facebook: Worcestershire 2022 Festival

Web: festival2022.org.uk

Twitter: @worcs2022



Worcestershire 2022

FESTIVAL NEWS

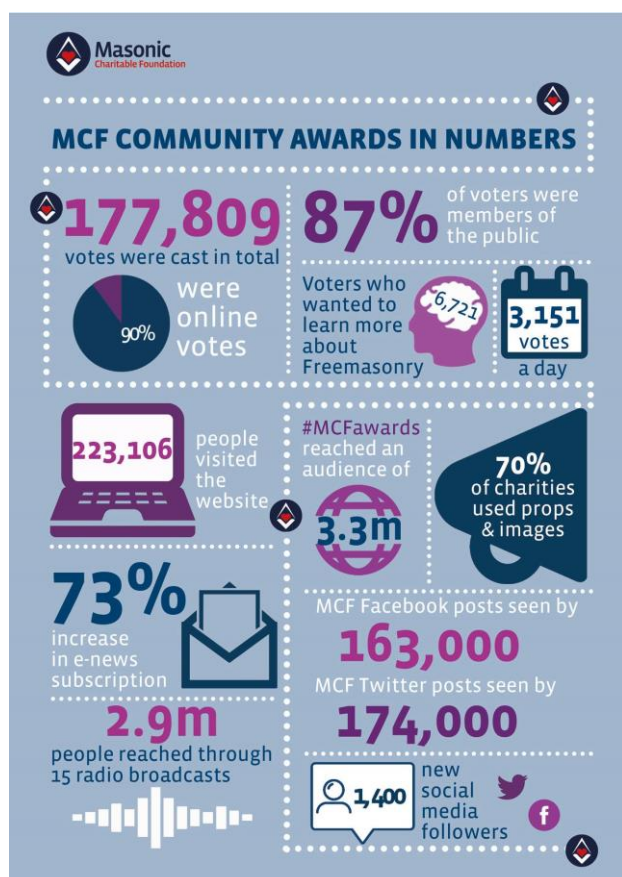


The MCF Community Awards

As you know the MCF not only helps Freemasons and their families with care from cradle to grave but also, and what is perhaps less well known, the wider local community.

We in Worcestershire are fortunate to be net beneficiaries receiving grants that exceed amounts raised through our Festivals. This year, in celebration of 300 years of Freemasonry, Freemasons and the public voted for 300 charities to receive a share of £3,000,000. Votes cast in Worcestershire have now enabled some of our **local** charities to receive a share of £58,000. NICE Centre for Movement Disorders will receive £25,000, Side by Side Theatre Company Stourbridge - £15,000, The Acquired Brain Injury Trust - £6,000, Maggs Day Centre - £4,000, All Saints Community Projects - £4,000 and The Franche Riding Group - £4,000

*Have another look at the article on Page 2 which explains how the MCF gives financial and caring support to Freemasons, their dependents and local charities in our Province. To enable the MCF to continue giving us that support, please consider making it your **CHARITY OF CHOICE**.*



Just one example which is making a difference of the general donations of the MCF...

From the MCF.. "We have awarded 477 grants to charities since launching in 2016, including £150,000 to Brain Tumour Research. Our funding will help ground breaking research into one of the most common and deadly types of brain tumour."

Professor Silvia Marino who is leading the research, explained; "Our grant will pave the way for new drugs designed to target and kill the cancer cells which will stop the tumour in its tracks".

Although the research is in its early stages, imagine a world where people diagnosed with brain cancer can feel a greater sense of hope, in part because of Masonic funding.



Brain Tumour Research



Contact Us

For general enquires: info@festival2022.org.uk

For media or articles: media@festival2022.org.uk

Or to contact the Chairman: chairman@festival2022.org.uk

Facebook: Worcestershire 2022 Festival

Web: festival2022.org.uk

Twitter: @worcs2022