



# Worcestershire 2022

## FESTIVE FESTIVAL NEWS



**Masonic**  
Charitable Foundation

### A message from the Festival Chairman....

We should all be very proud of our achievements as we approach the end of our second Festival year. At the beginning of November, we reached £820,000 representing 41% of our target in just over 30% of the Festival programme. As fantastic as this is, approximately £300,000 is represented by pledges through regular giving, suggesting that it may be "nip and tuck" as to whether our goal of £2,022,000 is reached in 2022. Whilst we have every confidence in what lies ahead, the necessity to continue our hard work and maintain momentum is clearly evident. We continue to aim for 1,000 regular givers but the number of new ones has now stalled. Regular giving is very important to the Festival's success so if you've been thinking about it for a while and never quite got round to the paperwork, now is surely the time. It's the simplest and easiest way to help and, whether it is £1, £5, £10 or £25 per month, every pound will make such a difference. Read on and see what has been happening at the MCF and around the Province. You will find out more about the people you are helping and the fun events freemasons, their families and friends have been enjoying.



Thank you for your continued support and for everything you do. Without your help the MCF would not be able to continue its fantastic work.

Patrick Firminger



We are pleased to announce a Ladies' Festival Weekend, to be held at the Hermitage Hotel Bournemouth on the 1st - 3rd February 2019 in support of the 2022 Festival.

For full details and to book, please see the site at <http://ladiesfestival2019.strikingly.com/>, or for more details email [david.emery@virtechs.co.uk](mailto:david.emery@virtechs.co.uk)

Places are limited, and past events have been extremely popular, so book early!

**BOOK NOW**  
YOU DON'T WANT TO MISS THIS ONE!



### Current number of honorific levels (\*End Oct 18)

**Steward**  
(£400)



359

**Vice Patron**  
(£750)



127

**Patron**  
(£1,000)



47

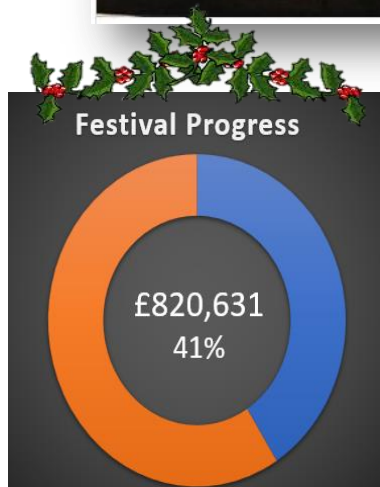
**Grand Patron**  
(£1,250)



124

A festival Steward jewel is available for any qualifying Mason who has either donated, or pledged to donate at least £400 by the end of the appeal. All other levels of honorifics above a Steward will automatically be awarded by letter (Vice Patron or Patron) or certificate (Grand Patron).

Jewels can be ordered for postal delivery by completing the form available on the website or email [info@festival2022.org.uk](mailto:info@festival2022.org.uk)



#### Contact Us

For general enquires: [info@festival2022.org.uk](mailto:info@festival2022.org.uk)

For media or articles: [media@festival2022.org.uk](mailto:media@festival2022.org.uk)

Or to contact the Chairman: [chairman@festival2022.org.uk](mailto:chairman@festival2022.org.uk)

**Facebook:** Worcestershire 2022 Festival

**Web:** [festival2022.org.uk](http://festival2022.org.uk)

**Twitter:** @worcs2022



# Worcestershire 2022

## FESTIVE FESTIVAL NEWS



### Regular Giver Numbers

	Lodge Name	Lodge Number	% of members regular givers
1	Fellowship	6707	90%
2	Elgar	9254	71%
3	St. Kenelm	6082	69%
4	Hagley & Holy Wells	7932	68%
5	Round Table	7961	67%
6	Wernlegh Abbey	6356	65%
7	Forge Mill	9658	60%
8	Northfield	5056	58%
9	Remembrance	8323	58%
10	Wyche	3638	58%
11	Fort Royal	4565	54%
12	Stechford	3185	50%
13	Avon	3569	50%
14	Bon Accord	4935	50%
15	Old Bromsgrovia	5743	48%
16	Lechmere Volunteer	1874	47%
17	Stability	564	46%
18	Perfection	8430	44%
19	Crystal	8881	42%
20	Old Edwardian	6141	40%
21	St. Laurence	2724	38%
22	Lodge of Yardley	6324	38%
23	Page	3378	38%
24	Masefield	2034	38%
25	Weatheroak	7214	37%
	Lodge at No 45 Of 115		25%
	Lodge at No 65 Of 115		18%
	Lodge at No 85 Of 115		12%
	Lodge at No 105 Of 115		4%
	Lodge at No 115 Of 115		0%

\*NOTE: We are aware of the several lodges that have regular givers using their own or Masonic Hall relief chests, which are not included in the figures above. If these lodges wish to be included please give the details to David Rice at [david.rice5224@talktalk.net](mailto:david.rice5224@talktalk.net)

Get your **Direct Debit** form here



Get your **Jewel** form here



### LODGE PROGRESS TO DATE

Your Worshipful Master and Charity Steward will have received your Lodge Festival Target, together with your regular giver percentages and amount donated and pledged so far.

They will be asked to share this information with you.

The Festival has an aim of 1.000 regular givers or more, to ensure that our overall target can be met. This requires only another 250 to sign up, or just over two more per lodge. Get that extra push in now!

### Provincial TIES

Ties are available for £15 and can be paid for and collected from the following:

**Bromsgrove**  
At the Provincial Office on  
01527 879300

**Worcester**  
Patrick Rimmer on  
01905 20636

**Droitwich**  
Bill Tucker on 07774 700811 or  
[wfgtskin@aol.com](mailto:wfgtskin@aol.com)



### WHY IS OUR SUPPORT FOR THE MCF SO IMPORTANT

On too many occasions we hear "I don't really understand what the MCF is about". Look at the MCF's website and "BETTER LIVES" publications at <https://mcf.org.uk/resources/> to see some real life stories. Some examples follow.

#### Ronnie's Story



*My life was in turmoil, you couldn't make it up – everything came tumbling down. I ended up homeless and living in a tent in a wood for eight months. I was battered and bruised, ostracised and alienated. My body deteriorated, my mind was in bits. Everyone knew me as a high flying individual so when it came falling down I didn't want to see anyone. In desperation I moved into a rental property without any funds or deposit. I hoped I would be able to get some urgent support from the Government, but it took so long I faced being evicted.*

*Tony, a visiting volunteer from the Province, came to see me one evening. He got in touch with the MCF on my behalf and within 48 hours an emergency Grant was paid into my Landlords bank account to cover my deposit and rent. The MCF gave me my life back. I needed family and support – not pills – and that's where my Brethren and the MCF came through. I am now Group Sales Operations Manager at a recruitment company and I'm doing OK. I'm back on my feet again and I couldn't have done it without the MCF – I'm eternally grateful.*



Contact Us

For general enquires: [info@festival2022.org.uk](mailto:info@festival2022.org.uk)

For media or articles: [media@festival2022.org.uk](mailto:media@festival2022.org.uk)

Or to contact the Chairman: [chairman@festival2022.org.uk](mailto:chairman@festival2022.org.uk)

Facebook: Worcestershire 2022 Festival

Web: [festival2022.org.uk](http://festival2022.org.uk)

Twitter: @worcs2022





# Worcestershire 2022

## FESTIVE FESTIVAL NEWS



### FURTHER STORIES TO SHOW SOME OF THE VALUABLE SUPPORT GIVEN BY FESTIVAL 2022 AND THE MCF

Sign up to the MCF's Newsletter at <http://mcf.org.uk/impact/> to see where our Festival funds are going.

#### TOMMY'S STORY

My dad, Tommy, was diagnosed with a heart condition but faced a wait of at least six months for surgery. His health was deteriorating before my eyes: he was out of breath all the time and extremely tired – he was plodding along, but struggling. Dad was stubborn, embarrassed even. He felt others were worse off than him and didn't want to ask, but then he fell ill during a Lodge meeting and his Brethren stepped in. Me and Mum burst into tears when we got the letter to say that the grant to fund Dad's operation had been approved. It was a weight lifted. After the operation, the surgeon said that Dad wouldn't be here if we'd waited six more months. Until then, they hadn't realised how bad his heart condition truly was.



Dad's doing brilliantly now. He's just going back to work and is looking forward to his first Masonic meeting. "I want to say 'thank you'. You've not just helped Dad - you've changed our family life for the better. The four of us are the only family we have and we are now able to do more together."



#### JENNA'S STORY

When Jenna struggled to pay her tuition fees, she worried she would have to drop out of university. Jenna is just one of the many young people who are now pursuing careers that they are passionate about, thanks to support from the MCF.

Jenna had always dreamed of becoming a dentist and was thrilled when she was offered a place at university. She applied for a loan but shortly before starting, she was told that she would have to fund the whole course herself. Unfortunately, Jenna's parents were also facing financial difficulties and were unable to offer any help. In order to make ends meet, she was forced to take on two jobs, on top of her demanding course workload.

"Eventually this took a toll on my physical and mental health, and I almost had to drop out of university. My grandfather was a Freemason and told me if I ever needed help, the Freemasons would be there for me – so I got in touch with the MCF and applied for support. The MCF paid for my tuition fees, and I've now graduated as a Dentist with first class honours. Applying for support was the best decision I've ever made! If I hadn't applied, I wouldn't have finished my degree and would not have my dream job."

The MCF offers support to the children and grandchildren of Freemasons, who are up to the age of 25 and in full time education. As well as covering essentials like school uniforms and childcare costs, these grants can also fund school trips, extracurricular activities and university scholarships.



Contact Us

For general enquiries: [info@festival2022.org.uk](mailto:info@festival2022.org.uk)

For media or articles: [media@festival2022.org.uk](mailto:media@festival2022.org.uk)

Or to contact the Chairman: [chairman@festival2022.org.uk](mailto:chairman@festival2022.org.uk)

Facebook: Worcestershire 2022 Festival

Web: [festival2022.org.uk](http://festival2022.org.uk)

Twitter: @worcs2022



# Worcestershire 2022

## FESTIVE FESTIVAL NEWS



**Masonic**  
Charitable Foundation

THERE ARE SO MANY NEEDY AND DESERVING CASES THAT  
REQUIRE OUR ASSISTANCE. ONE DAY IT COULD BE ANY ONE OF  
US OR YOU MAY EVEN HAVE BEEN SITTING WITH A BENEFICIARY  
AT YOUR LAST LODGE MEETING - You would never know.



IF YOU CAN HELP THEN PLEASE DO SO BY SIGNING UP TO

## REGULAR GIVING



Phone: 020 3146 3345

Online - click:

[www.mcf.org.uk/festival/  
Worcestershire 2022](http://www.mcf.org.uk/festival/Worcestershire%2022)

Download the form - click:

[www.festival2022.org.uk/  
downloads](http://www.festival2022.org.uk/downloads)

Regular giving is so important to our  
Festivals success with its effectiveness  
diminishing as every month passes.

If you have been saying to yourself "I  
MUST DO THAT" then there is no time  
like the present. Its easy by doing one  
of the following:

PLEASE HELP IF YOU CAN



Contact Us

For general enquires: [info@festival2022.org.uk](mailto:info@festival2022.org.uk)

For media or articles: [media@festival2022.org.uk](mailto:media@festival2022.org.uk)

Or to contact the Chairman: [chairman@festival2022.org.uk](mailto:chairman@festival2022.org.uk)

Facebook: Worcestershire 2022 Festival

Web: [festival2022.org.uk](http://festival2022.org.uk)

Twitter: @worcs2022



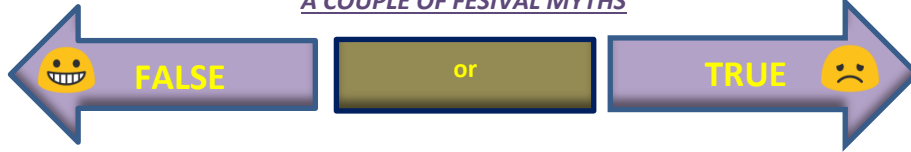
# Worcestershire 2022

## FESTIVE FESTIVAL NEWS



**Masonic**  
Charitable Foundation

### A COUPLE OF FESTIVAL MYTHS



**ON TOO MANY OCCASIONS WE HEAR FROM WORCESTERSHIRE FREEMASONS WHO SAY... "Any money we raise for the Festival is for those outside the Province of Worcestershire"**

**FALSE** - This is simply not true! Worcestershire Freemasons, their families and dependents as well as local charities are net beneficiaries. In the 2011 Festival we raised £1.68m and for the 2022 Festival we are targeting £2.022m.

Since January 2012 our members, their families and dependents have received financial support, children's maintenance, healthcare & support and residential care totalling in excess of £1,500,000. Add to this an assessment of grants for the next four years through to 2022 (based on this year's low receipts), and our members and their families will have received in excess of £2.05m over the 11 year Festival cycle.

In addition, Worcestershire charities have received significant benefit. Some recent examples include, amongst others, St Basil's, Bromsgrove (£54K), Side by Side Theatre Company, Kings Heath (£15K), Worcester Cathedral (£50K), air ambulance, local Hospices and many, many others. It would be fair to estimate that grants into Worcestershire (including local charities) approach a figure nearer £3m over the Festival cycle.

Next time you are at a Lodge meeting, have a look round and it is quite likely there will be someone who has benefitted from an MCF Grant. You would never know it.



**WE ALSO HEAR ... "If We pass over our Lodge Charity Monies to E2022, it will sit in the Bank for four years"**

**FALSE** - This is simply not true! Whilst a small sum always remains in the E2022 Relief Chest, every month any surplus moves across to the MCF for use at the coal face where it is truly needed. It is put to work straight away and any large cheque presentation in 2022 will simply be symbolic.

Charitable collections are made for charitable purposes. It is therefore important that your money goes to where it is needed as soon as possible, rather than sitting in a bank account with little interest and gathering dust. Any money your Lodge chooses to put into the Worcestershire E2022 Relief Chest that is transferred to the MCF attracts a significant **2.25%** notional interest rate and this is then credited to your Lodge.



## THE ADVENTURES OF FESTIVAL TED MASON



All lodges will have received their own Little Ted, and instructions how we can sponsor Festival Ted to travel the world looking for his lost teddies. Little Teddies have so far already been to the four corners of the globe!

See the map of his progress on the Festival website, and also a global map showing sightings of where his little teds have been spotted - visit [festival2022.org.uk/ted](http://festival2022.org.uk/ted)



Contact Us

For general enquires: [info@festival2022.org.uk](mailto:info@festival2022.org.uk)

For media or articles: [media@festival2022.org.uk](mailto:media@festival2022.org.uk)

Or to contact the Chairman: [chairman@festival2022.org.uk](mailto:chairman@festival2022.org.uk)

Facebook: Worcestershire 2022 Festival

Web: [festival2022.org.uk](http://festival2022.org.uk)

Twitter: @worcs2022





# Worcestershire 2022

## FESTIVE FESTIVAL NEWS

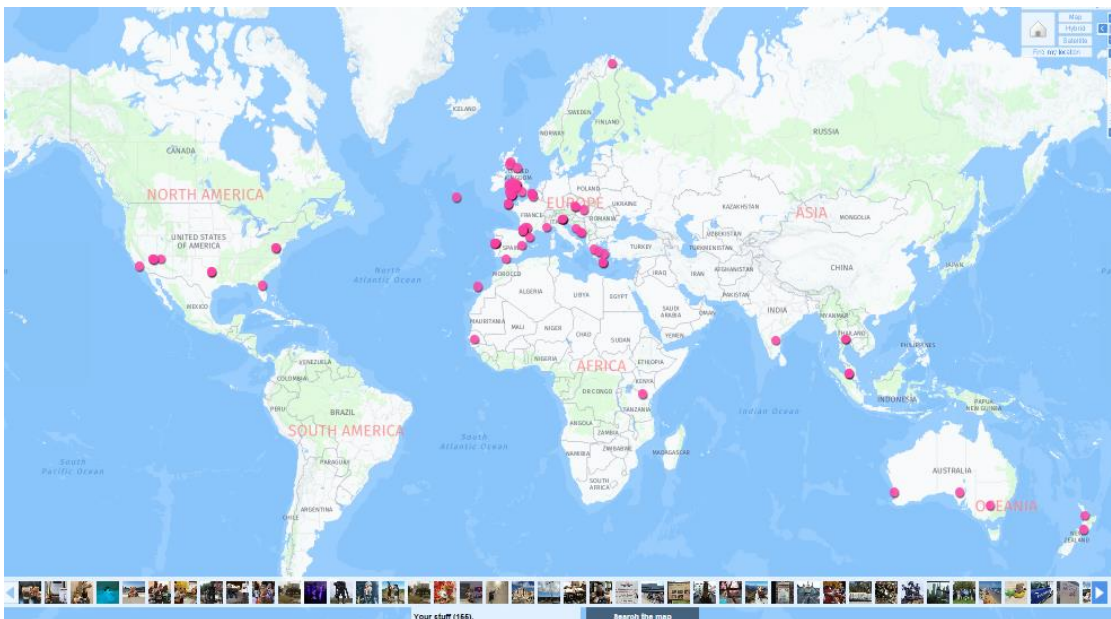


Come and like our  
Facebook page

[facebook.com/WorcsPGLFestival2022](https://facebook.com/WorcsPGLFestival2022)



Little Teds have been spotted over a very large area! It looks like we need some hunters to track them down in Russia and South America! Email your photos to [media@festival2022.org.uk](mailto:media@festival2022.org.uk), post them on Facebook or tag them on Twitter with **#FestivalTed**



*Festival Ted en route to the  
Menin Gate wearing a  
Worcestershire Regiment  
cap badge*



Contact Us

For general enquires: [info@festival2022.org.uk](mailto:info@festival2022.org.uk)

For media or articles: [media@festival2022.org.uk](mailto:media@festival2022.org.uk)

Or to contact the Chairman: [chairman@festival2022.org.uk](mailto:chairman@festival2022.org.uk)

Facebook: Worcestershire 2022 Festival

Web: [festival2022.org.uk](http://festival2022.org.uk)

Twitter: @worcs2022



# Worcestershire 2022

## FESTIVE FESTIVAL NEWS



### SPONSORED EVENTS

These are just some of the sponsored events and intrepid fund raisers going on around the province that we know about...Please help them achieve their goals!

If you want your event featured just drop us a line.

Just click on the picture to take you directly to their fundraising page where you can donate online!

**Patrick Firminger**  
Half a Ton for Ted



**Richard Macey**  
Half a Ton for Ted



**Taff Hill**  
Sponsored Weight loss



**Rogue Ted**



**100 Mile Masonic Walk**



Big Ted spotted at Spetchley Gardens and the Worcester Library and Museum Pop up

### EVERYDAY HERO

It could be a sponsored silence, walk, cycle, read or even a treasure hunt. In fact, it can be anything at all, but be as imaginative as you can and make sure you enjoy it with your friends and family. It doesn't even have to be energetic.

Once you've decided on your sponsored event it couldn't be easier to set up an online sponsorship page. Use **Everydayhero** and it will take the payments with NO commission, it will arrange the transfer and collect all gift aid – and we can advertise your event for you too!

Just visit

[www.everydayhero.co.uk/event/E2022](http://www.everydayhero.co.uk/event/E2022)

You can of course raise sponsorship with a traditional paper form. However, those who have already set up their own Everydayhero page have been surprised at how easy it is to raise sponsorship. By simply placing their event on Facebook and Twitter and copying the Everydayhero link into an email before sending to friends, family and work colleagues, the sponsorship can come flowing in.

**Tip - IT WILL ALSO COUNT TOWARDS YOUR LODGES FESTIVAL TARGET IF YOU ADD THE LODGE NUMBER IN THE URL**

If every member of your Lodge takes part in a Sponsored event, it is likely that all Lodges would reach and probably exceed their Festival target. Give it a go and be surprised!

Any help, just email our fundraising specialist Mark Babington on

<mailto:fundraising@festival2022.org.uk>

### MAKE FULL USE OF YOUR HALL COORDINATOR - Your Hall

Coordinator is an invaluable asset and source of information that is there to help or answer your questions wherever he can. He has lots of guidance and good advice to give. Make sure your Lodge Charity and/or Festival Steward maintains regular contact with him even if only to seek or give an update. Don't just wait for him to contact you, make it two way and give him a call. You can find his contact details on the festival website [here](#) and he will welcome your approach.



Contact Us

For general enquires: [info@festival2022.org.uk](mailto:info@festival2022.org.uk)

For media or articles: [media@festival2022.org.uk](mailto:media@festival2022.org.uk)

Or to contact the Chairman: [chairman@festival2022.org.uk](mailto:chairman@festival2022.org.uk)

Facebook: Worcestershire 2022 Festival

Web: [festival2022.org.uk](http://festival2022.org.uk)

Twitter: @worcs2022





# Worcestershire 2022

## FESTIVE FESTIVAL NEWS



### EVENTS AROUND THE PROVINCE

A snapshot of some of the events that are occurring around the province in the next few months.....



#### Ahoy there Sailor ?

Old Bromsgrovian Lodge No. 5743 did some sponsored dragon boat racing and raised £1,675. Their Worshipful Master also skippered his narrow boat from Manchester to a Lodge meeting in Bromsgrove raising a further £1,192!!



#### BIRMINGHAM VELO 2019

The MCF has purchased a number of places for us on the Birmingham Velo. These are being snapped up quickly so if you are a keen cyclist interested in a good challenge, get your name down now. Contact Bro. Mark Babbington at [FundRasing@festival2022.org.uk](mailto:FundRasing@festival2022.org.uk) who can give you full details.

#### Advance Notice - More Beer!

WBro Stan Hems (Moseley Lodge No 5224) with the assistance of others is looking to arrange a Beer Festival, Rugby and Casino night at Kings Heath during the six nations championship in April 2019.

A committee is being formed and any help that any Brother would like to give would be appreciated.

It is planned that there will be an opportunity for Lodges to sponsor a barrel of Beer, in return for admission tickets, casino tokens and beer discount!

Watch this space for more information and details, for what in the past has been a most enjoyable event! Please contact Stan [here](#)



Contact Us

For general enquires: [info@festival2022.org.uk](mailto:info@festival2022.org.uk)

For media or articles: [media@festival2022.org.uk](mailto:media@festival2022.org.uk)

Or to contact the Chairman: [chairman@festival2022.org.uk](mailto:chairman@festival2022.org.uk)

Facebook: Worcestershire 2022 Festival

Web: [festival2022.org.uk](http://festival2022.org.uk)

Twitter: @worcs2022





# Worcestershire 2022

## FESTIVE FESTIVAL NEWS



### Many Thanks!



### WOW !!!

If you know of an event where a donation is being presented, let us know at [media@festival2022.org.uk](mailto:media@festival2022.org.uk) and we can capture the moment!



The M.E. Grand Superintendent confirms making a most generous £10,000 donation from the Provincial Grand Chapter of Worcestershire.



The Cubit Club Chairman presents a cheque for £2,300 raised at the family and friends' weekend to the PGM.

### The (not so fat) Controller!

Bro I K Brunel is looking on approvingly as the WM of Permanent Way Lodge presents a generous cheque for £1,000 for the Festival 2022.



### WBro Keith Evans APGM leading from the front!

A great afternoon held by WM of Page Lodge W. Bro David Brown at vertical Limits, climbing and Strawberry Tea afternoon where over £400 was raised for the Festival.



Contact Us

For general enquires: [info@festival2022.org.uk](mailto:info@festival2022.org.uk)

For media or articles: [media@festival2022.org.uk](mailto:media@festival2022.org.uk)

Or to contact the Chairman: [chairman@festival2022.org.uk](mailto:chairman@festival2022.org.uk)

Facebook: Worcestershire 2022 Festival

Web: [festival2022.org.uk](http://festival2022.org.uk)

Twitter: @worcs2022

Editor: [WBro A Philpott](#)



# Worcestershire 2022

## FESTIVE FESTIVAL NEWS



W.Bro. Gibbs as WM and W.Bro Sharratt as Charity Steward of Lickey Hills Lodge No 5947 presents a £1,000 cheque to W.Bro. Firminger APMG in aid of Worcestershire's 2022 Festival. Thank you Lickey Hills for your ongoing and fantastic support



Great installation at WIM lodge where the CUBIT CLUB presented a cheque for £3707 from the raffles of installation gin. A massive thanks to all the lodges who have participated.



### Festival Ale!!

The supplies of the Cubit Club Festival Ale have once again been replenished...order yours by emailing [2022festivalale@cubitclub.org.uk](mailto:2022festivalale@cubitclub.org.uk)

**Q? - Regular donation - What monthly sum do I need to set up now to become a Festival Steward?**

We are well into Festival, but It's still just as little as £9 per month to become a festival steward. If you haven't already, sign up for regular giving for the easiest way to support your festival!

Check out to see how easy it is at

<http://www.festival2022.org.uk/donating-to-the-festival/>

*Wishing all our Brethren, their friends and families a wonderful Christmas and best wishes for the new year.*

*If you have any festival articles you wish to include in future editions, please drop me a line*

*The ED*



Contact Us

For general enquires: [info@festival2022.org.uk](mailto:info@festival2022.org.uk)

For media or articles: [media@festival2022.org.uk](mailto:media@festival2022.org.uk)

Or to contact the Chairman: [chairman@festival2022.org.uk](mailto:chairman@festival2022.org.uk)

Facebook: Worcestershire 2022 Festival

Web: [festival2022.org.uk](http://festival2022.org.uk)

Twitter: @worcs2022