



Worcestershire 2022

FESTIVAL NEWS



Masonic
Charitable Foundation

A message from the Festival Chairman....

The support, tremendous effort and hard work put in by so many Worcestershire Masons over the last 15 months is humbling, particularly when we consider that the amount donated and pledged so far stands in excess of £690,000. However, if we are to maintain this initial momentum, we must continue looking for a further 350 regular givers to achieve our target of 1,000. As the number of new regular givers inevitably falls, we become ever more reliant on Lodge charity collections and Fundraising events. Many events have already taken place and there are more in the pipeline as you can see below.

We are now hoping that in addition to regular and ongoing events, each Lodge will take part in an annual Festival Fundraising Month. Amounts raised in these months will form an essential part of our £2,022,000 ambition, so please give careful thought on how you might help. If you are struggling for ideas the Festival committee are here to assist, but whatever you decide, make sure you have fun and enjoy the journey. On behalf of the Masonic Charitable Foundation and all those you are helping, may we pass on sincere thanks for what you are doing.



Patrick Firmininger



This year, the idea of a “Festival Fundraising Month” has been adopted to encourage each lodge to arrange an **EXTRA** activity, that would normally be in the summer recess to enable as many members, their families and friends as possible to take part....the idea, as well as to raise funds, is of course to make it fun, raise awareness and be family friendly!

Taking place during June and July 2018, the “Festival Month” is a four-week fundraising period where every Lodge in the Province is being asked if they could take part in a fundraising event.

It is suggested that these activities can be anything from individual sponsored events, a lodge event, or activities where a group of lodges combine to put on a larger event. In addition, there are several other “Province wide” events being planned – including a Provincial Sponsored walk, and the Cubits Club “Festival Family Fun weekend and Beer Festival”. Already there are a range of Lodge sponsored events that are being organised – more details inside!



Current number of honorific levels

Steward
(£400)



305

Vice Patron
(£750)



121

Patron
(£1,000)



45

Grand Patron
(£1,250)



105

A festival Steward jewel is available for any qualifying Mason who has either donated, or pledged to donate at least £400 by the end of the appeal. All other levels of honorifics above a Steward will automatically be awarded by letter (Vice Patron or Patron) or certificate (Grand Patron).

Jewels can be ordered for postal delivery by completing the form available on the website or email info@festival2022.org.uk



Contact Us

For general enquires: info@festival2022.org.uk

For media or articles: media@festival2022.org.uk

Or to contact the Chairman: chairman@festival2022.org.uk

Facebook: Worcestershire 2022 Festival

Web: festival2022.org.uk

Twitter: @worcs2022



Worcestershire 2022

FESTIVAL NEWS

**Masonic**
Charitable Foundation

Regular Giver tables * at end March 18

Rank	Lodge Name	Lodge Number	% of members regular givers
1	Fellowship	6707	90%
2	Elgar	9254	71%
3	St. Kenelm	6082	69%
4	Hagley & Holy Wells	7932	68%
5	Remembrance	8323	63%
6	Forge Mill	9658	62%
7	Round Table	7961	58%
8	Wernlegh Abbey	6356	57%
9	Northfield	5056	56%
10	Fort Royal	4565	54%
11	Bon Accord	4935	50%
12	Stechford	3185	50%
13	Avon	3569	50%
14	Old Bromsgrovian	5743	46%
15	Stability	564	42%
16	Crystal	8881	42%
17	Old Edwardian	6141	40%
18	St. Laurence	2724	38%
19	Lodge of Yardley	6324	38%
20	Lechmere Volunteer	1874	38%
21	Masefield	2034	38%
22	Wyche	3638	37%
23	Page	3378	36%
24	Weatheroak	7214	33%
25	Campbell	3643	32%
45	Lodge at No 45 Of 115		23%
65	Lodge at No 65 Of 115		15%
85	Lodge at No 85 Of 115		11%
105	Lodge at No 105 Of 115		0%
115	Lodge at No 115 Of 115		0%

*NOTE: We are aware of the several lodges that have regular givers using their own or Masonic Hall relief chests, which are not included in the figures above. If these lodges wish to be included please give the details to David Rice at david.rice5224@talktalk.net

Get your **Direct**
Debit form here



LODGE TARGETS and PROGRESS TO DATE

Your Worshipful Master and Charity Steward will have received your Lodge Festival Target, together with your regular giver percentages and amount donated and pledged so far.

They will be asked to share this information with you.

The Festival has an aim of 1.000 regular givers or more, to ensure that our overall target can be met. This requires only another 350 to sign up, or just over 3 more per lodge. Get that extra push in now!

Provincial TIES

Ties are available for £15 and can be paid and collected from the following:

Bromsgrove
At the Provincial
Office on
01527 879300

Worcester
Patrick Firminger on
01905 20636

Droitwich
Bill Tucker on 07774
700811 or
wfgtskin@aol.com



Contact Us

For general enquires: info@festival2022.org.uk

For media or articles: media@festival2022.org.uk

Or to contact the Chairman: chairman@festival2022.org.uk

WE NEED YOU!

Regular Giving - Don't delay, do it today!

If you feel able, then whether it's £1 or £25 per month between now and August 2022 it doesn't matter. Every pound makes such a difference to the MCF! All you need to do is to have your bank account details to hand and either...

Telephone NOW on our dedicated line - **020 3146 3345** (quoting Festival Relief Chest number **E2022**. Or;

Go online NOW at –
www.mcf.org.uk/festival/Worcestershire2022. Or;

Fill in and post a form NOW – all forms available from –
www.festival2022.org.uk/downloads

or if you get stuck just email
info@festival2022.org.uk for forms
or for any advice



Get your **Jewel**
form here



Facebook: Worcestershire 2022 Festival

Web: festival2022.org.uk

Twitter: @worcs2022



Worcestershire 2022

FESTIVAL NEWS



Masonic
Charitable Foundation



Masonic Charitable Foundation The MCF - Why should they be a Lodge's Charity of Choice?

(or expelling some of the myths about giving to the "London black hole...")

We all know they are there to support Freemasons and their family members who are facing financial, health, family or care difficulties. However...

Supporting the wider community

Our support extends beyond Freemasonry through grants to local and national charities that help the most vulnerable people in wider society. During the last six months these Worcestershire Charities have received grants from the MCF to the total value of over £112,000

St. Basils, Nice, Side By Side, Acquired Brain Injury, Maggs Day Centre, All Saints Community Projects, The Franche Riding Group.

To this total must be added the confidential support given to Freemasons and their families in need.

By allowing your Charitable donations to be routed through London these charities have received 25% more than would have been possible had we given our donations directly to them - This is why we should always use the experts in London to turn every £1 into £1.25. In addition, if a Lodge nominates a local charity to be a beneficiary, then it is also possible that the MCF would increase that donation far beyond what the Lodge has raised themselves.

The total grants given to this Province far exceed the money we give to the MCF, we always receive far more than we donate. Please support our 2022 Appeal, the MCF can only support you if you support it.

WBro David Dey, Prov. MCF Representative

As we look towards the future, we hope our work will continue to make an impact on both the Masonic family and your local community.
The MCF will consider all applications for support on an individual basis, so if in doubt – please get in touch!

If you are a Freemason or close family member of a Freemason and need support with a financial, health, family or care need, call our confidential enquiry line on freephone 0800 035 60 90 or email help@mcf.org.uk.

If you are a representative of a charity, please visit mcf.org.uk/community to find out more about our Charity Grant programme, or call 0203 146 3337 for more information.
See Website www.mcf.org.uk for more details



THE ADVENTURES OF FESTIVAL TED MASON

All lodges will have received their own Little Ted, and instructions how we can sponsor Festival Ted to travel the world looking for his lost teddies. Little Teddies have so far already been to the four corners of the globe!

See the map of his progress on the Festival website, and also a global map showing sightings of where his little teds have been spotted - visit festival2022.org.uk/ted



Contact Us

For general enquires: info@festival2022.org.uk

For media or articles: media@festival2022.org.uk

Or to contact the Chairman: chairman@festival2022.org.uk

Facebook: Worcestershire 2022 Festival

Web: festival2022.org.uk

Twitter: @worcs2022



Worcestershire 2022

FESTIVAL NEWS



Masonic
Charitable Foundation

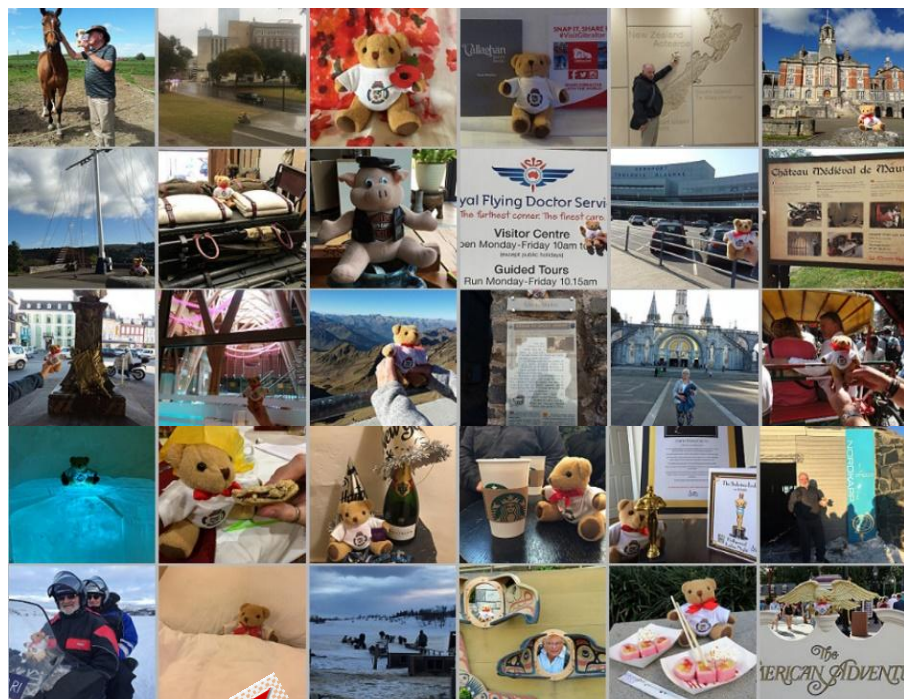
Come and like our
Facebook page

facebook.com/WorcsPGLFestival2022

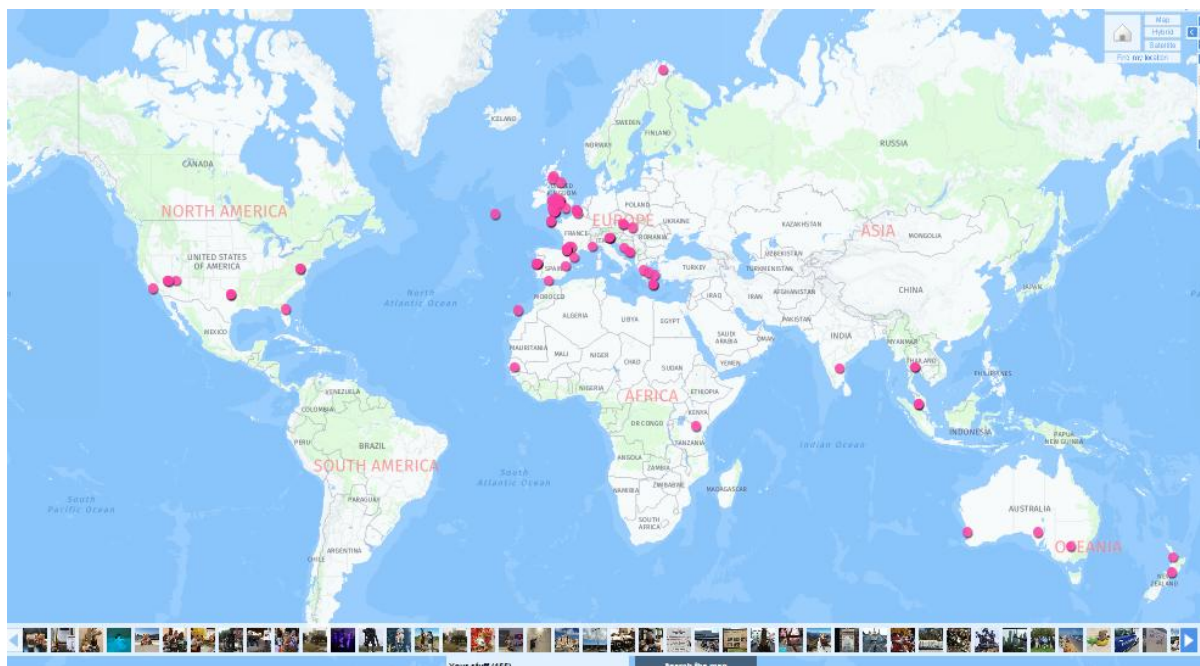


Little Teds have been spotted over a very large
area! It looks like we need some hunters to
track them down in Russia and South America!

Email your photos to
media@festival2022.org.uk, post them on
Facebook or tag them on Twitter with
#FestivalTed



Some of your latest pictures – for more visit
festival2022.org.uk/sighting-album/



Our Festival
Chairman dressed as
Elvis (or is it Ming
the Merciless!) with
their Festival Ted at
the recent one-year
celebration of the
Aedificandum Lodge



Contact Us

For general enquires: info@festival2022.org.uk

For media or articles: media@festival2022.org.uk

Or to contact the Chairman: chairman@festival2022.org.uk

Facebook: Worcestershire 2022 Festival

Web: festival2022.org.uk

Twitter: @worcs2022



Worcestershire 2022

FESTIVAL NEWS



SPONSORED EVENTS



These are just some of the sponsored events and intrepid fund raisers going on around the province that we know about...Please help them achieve their goals!

If you want your event featured just drop us a line.

Just click on the picture to take you directly to their fundraising page where you can donate online!

Patrick Firminger
Half a Ton for Ted



Richard Macey
Half a Ton for Ted



Taff Hill
Sponsored Weight loss



Dean Wagstaffe
Masonic Centre Cycle



Barry Griffin
Sponsored Weight loss



Mark Babington
Birmingham Half Marathon



Wayne Barker
100 Mile Cycle Ride



PROVINCIAL SPONSORED WALK



Neil Gibbs
Narrow Boat Journey



EVERYDAY HERO

It could be a sponsored silence, walk, cycle, read or even a treasure hunt. In fact, it can be anything at all, but be as imaginative as you can and make sure you enjoy it with your friends and family. It doesn't even have to be energetic.

Once you've decided on your sponsored event it couldn't be easier to set up an online sponsorship page. Use **Everydayhero** and it will take the payments with NO commission, it will arrange the transfer and collect all gift aid – and we can advertise your event for you too!

Just visit

www.everydayhero.co.uk/event/E2022

You can of course raise sponsorship with a traditional paper form. However, those who have already set up their own Everydayhero page have been surprised at how easy it is to raise sponsorship. By simply placing their event on Facebook and Twitter and copying the Everydayhero link into an email before sending to friends, family and work colleagues, the sponsorship can come flowing in.

Tip - IT WILL ALSO COUNT TOWARDS YOUR LODGES FESTIVAL TARGET IF YOU ADD THE LODGE NUMBER IN THE URL

If every member of your Lodge takes part in a Sponsored event, it is likely that all Lodges would reach and probably exceed their Festival target. Give it a go and be surprised!

Any help, just email our fundraising specialist Mark Babington on <mailto:fundraising@festival2022.org.uk>



The WM of Royds Lodge No 1204, WBro Tony O'Donnell presents the PGM with a cheque for £1000 towards Festival 2022



Contact Us

For general enquires: info@festival2022.org.uk

For media or articles: media@festival2022.org.uk

Or to contact the Chairman: chairman@festival2022.org.uk

Facebook: Worcestershire 2022 Festival

Web: festival2022.org.uk

Twitter: @worcs2022



Worcestershire 2022

FESTIVAL NEWS



Masonic
Charitable Foundation

EVENTS AROUND THE PROVINCE

A snapshot of some of the events that are occurring around the province in the next few months and during the Festival Fundraising Month....

Provincial Grand Master's Sponsored Walk "The Himbleton Circle"

The PGM Robert Vaughan, his Deputy and a number of Assistants will be undertaking a ten mile sponsored walk, supporting Worcestershire's 2022 Festival.

The walk will start and finish at the Cubit Club "Family and Friends Festival Weekend" on Saturday 16th June but please come along with friends and family to enjoy the weekends entertainment. We would love you to join us on the walk with your little "Festival Ted" and raise some sponsorship yourselves.

Get a few of your Lodge members together and it will contribute to your Lodge's £400 "Festival Fundraising Month" total.

Please feel free to set up your own "everydayhero" sponsorship page and join us on what we are sure will be a fun day out.

To sponsor the team, click [HERE](#)



HURRY UP!

The Avon Run - Sunday 15th APRIL

The Avon Run is a vehicle based orienteering event. In teams, you will explore the local area hunting for clues and answering local knowledge questions. The aim is to complete all elements of the run covering the shortest distance and in the timeliest fashion. The Avon Run is not a race, but rather an opportunity to use and expand your local knowledge while having fun and engaging in friendly competition. Being equipped only with the provided map as well as pen and paper you will answer tricky riddles, find hidden clues, all while discovering the unsung beauty of Worcestershire's varied landscape. Team spirit, creativity and analytical thinking will help you put all the puzzle pieces together.

To book a place and for more information, see www.theavonrun.co.uk



Join us on Twitter [@worcs2022](#) for all the latest news, and don't forget to post your little ted photos with [#festivalted](#)

Looking for something for your Lodge to do in Festival month? Why not run a stall at the Cubit Club Family and friends weekend and raise money that way? Tombola Stall, coconut shy, wet sponge at the WM???



Contact Us

For general enquires: info@festival2022.org.uk

For media or articles: media@festival2022.org.uk

Or to contact the Chairman: chairman@festival2022.org.uk

Facebook: Worcestershire 2022 Festival

Web: festival2022.org.uk

Twitter: [@worcs2022](#)



Worcestershire 2022

FESTIVAL NEWS



Masonic
Charitable Foundation

Many Thanks!

These are some of the very generous large donations we've had recently. We appreciate all donations, so apologies if yours is not mentioned.

£2,800	Vernon Lodge
£2,750	Ladies Gift Fund
£1,782	Old Bromsgrovian Lodge
£1,632	Fort Royal Lodge
£1,433	Elmley Castle Lodge
£1,307	White Ensign Lodge
£1,167	Forge Mill Lodge
£1,099	Lodge of St George
£1,000	Royds Lodge
£1,035	Worcs Installed Masters' Lodge
£797	Wyche Lodge
£738	Avon Lodge
£602	Lechmere Volunteer Lodge
£595	Unity Lodge
£540	Wythall Lodge

If you know of an event where a donation is being presented, let us know at media@festival2022.org.uk and we can capture the moment!

How about joining in a Garden Party in the spectacular grounds of **Stanway House**, on Sunday 15th July.

Elmley Castle Lodge have exclusive use of the grounds for a picnic where tea and scones are provided!

See the flyer for full details and bookings.



Elmley Castle Lodge supporting

The Worcestershire Provincial Lodge Festival 2022



Garden Party



To be held on

Sunday 15th July 2018 opening at 2.30pm

At Stanway House, Stanway, GL54 5PQ

Off the B4077 Toddington to Ford Road

By Kind permission of Lord Neidpath 13th Earl of Wemyss and March.

The Garden Party will take place in the beautiful grounds of this magnificent Jacobean Manor and if the weather is unkind in the Tythe Barn.



Stanway House Features the Worlds Highest Gravity Fed Fountain (300ft) which will be operating during the afternoon for our enjoyment.

Feel free to bring along a picnic a garden chair and a bottle or two for your enjoyment.

Tea with Buttered Scones Strawberry Jam and Cakes are included in the admission charge.

His Lordships "STABLE OF RACING DUCKS" will be racing during the afternoon as a little fund raiser. All proceeds to WPGL Festival2022

Admission £10 per person. Ample Free Parking

Please reserve me Places at £10 per person. Total Cost £.....
Please list those attending:

I enclose a cheque for the above amount made payable to Elmley Castle Lodge Alms Acc.
Please forward to: Peter Ross, Ashdown, Mount Pleasant, Childswickham, Broadway WR12 7JA 01386 443924 email: peterosco@aol.com



Contact Us

For general enquires: info@festival2022.org.uk

For media or articles: media@festival2022.org.uk

Or to contact the Chairman: chairman@festival2022.org.uk

Facebook: Worcestershire 2022 Festival

Web: festival2022.org.uk

Twitter: @worcs2022



Worcestershire 2022

FESTIVAL NEWS



Masonic
Charitable Foundation

Chaddesley Corbett Lodge No. 8942



TEDDY BEARS' BARBECUE & PIC-NIC

To be held on
Friday the 29th June, 2018

At the
Chaddesley Corbett Sports Club
Longmore
Chaddesley Corbett
Nr. Kidderminster, DY10 4RD
60.30 p.m. for 7.00 pm



BRING YOUR LODGE TEDDY BEAR

Entrance fee £5.00 per head.

Proceeds to 2022 Festival and we will be holding a Raffle.
An opportunity to meet with families and friends in the convivial
surroundings of this village Cricket Club.

Bring yourselves, Barbecue Food, Cooking Utensils, Plates etc.!
Large BBQ provided!
Pay Bar!

The Club provides the bar and clubhouse free of charge, so please support the
Bar and staff and do not bring your own drinks

Please reply to the Lodge Secretary, Don Grant, by email or telephone
before Friday 29th June so that we know how many will be attending
6 Sandhampton, Astley, Worcs.
email : dongrantpnp@gmail.com
Answerphone : 01299 211654



The WM of Ribbesford Lodge no
7696 presents a cheque in aid of
the Festival at their installation
meeting to APGM WBro Keith Evans

**Q? - Regular donation - What
monthly sum do I need to set
up now to become a Festival
Steward?**

We are well into Festival, but
It's still just as little as £8 per
month to become a festival
steward. If you haven't already,
sign up for regular giving for
the easiest way to support your
festival!

Check out to see how easy it is
as

<http://www.festival2022.org.uk/donating-to-the-festival/>



Contact Us

For general enquires: info@festival2022.org.uk

For media or articles: media@festival2022.org.uk

Or to contact the Chairman: chairman@festival2022.org.uk

Facebook: Worcestershire 2022 Festival

Web: festival2022.org.uk

Twitter: @worcs2022



Worcestershire 2022

FESTIVAL NEWS



Masonic
Charitable Foundation

Cubit Club Festival Family & Friends Festival 2018

The weekend of Friday 15th - Sunday 17th June 2018 sees the Cubit Club hosting a range of activities at Himbleton, Worcestershire aimed at providing a fun filled few days for all masons, non-masons, family and friends! Make it a weekend with pitches for camping and motorhomes - including water, electrics and showers, or just a day pass for the Saturday, there will be something for everyone! £30 for a weekend pitch, or £10pp for a day pass.



Arrive after Midday on Friday 15th for pitching – the evening will bring you a drink and a burger included in the price, with the onsite pub (the Galton Arms) open for further business!

Saturday sees the main activities. The pub will be open for breakfast, and events start from around midday with all the children's activities and stalls. The evening will see live bands entertaining you in the marquees along with a selection of beers, prosecco and gin in the beer tent, with food stall on hand.

Sunday will see the "sail away party", with again breakfast available in the Galton Arms.

STALLS - if any lodge wishes to use the opportunity to have your festival fundraising month activity here by running a stall, please get in touch!

STEWARDS – the Cubit club would welcome any volunteers to help out for a couple of hours on a rota basis, with help on car-parking, traffic management or general on-site help, please email.

SPONSORSHIP - there are still opportunities for sponsorship if any company would like to have their recognition on merchandising and advertising. Again, please email and get in touch to discuss options.

To book or for any enquiries on stalls, stewards, sponsorship etc, please email events@cubitclub.org.uk



Festival Ale is Back!!

The supplies of the Cubit Club Festival Ale have now been replenished...order yours by emailing 2022festivalale@cubitclub.org.uk



Contact Us

For general enquiries: info@festival2022.org.uk

For media or articles: media@festival2022.org.uk

Or to contact the Chairman: chairman@festival2022.org.uk

Facebook: Worcestershire 2022 Festival

Web: festival2022.org.uk

Twitter: @worcs2022